

THE GATEWAY - FREMONT'S PREMIER SENIOR RESIDENCES

HISTORIC FREMONT HIGH SCHOOL ADAPTIVE USE



The adaptive use of the Fremont High School will create affordable senior housing while restoring its original character.

The project will:

- Restore the exterior through the installation of new windows to replicate the appearance of the original windows.
- Recreate the courtyard to its original configuration.
- Restore the corridors through the removal of dropped ceilings and retention of original trim, some lockers, and stairways.
- Provide a community room and specialty spaces for use by the tenants.
- Provide approximately 38 one and two bedroom apartments.
- Retain built-in cabinetry as amenities in the apartments.



QUINN EVANS
ARCHITECTS



BUILDING FACADE



HISTORIC PHOTO SHOWING THE ORIGINAL WINDOWS (1926)



FIRST FLOOR PLAN DIAGRAM



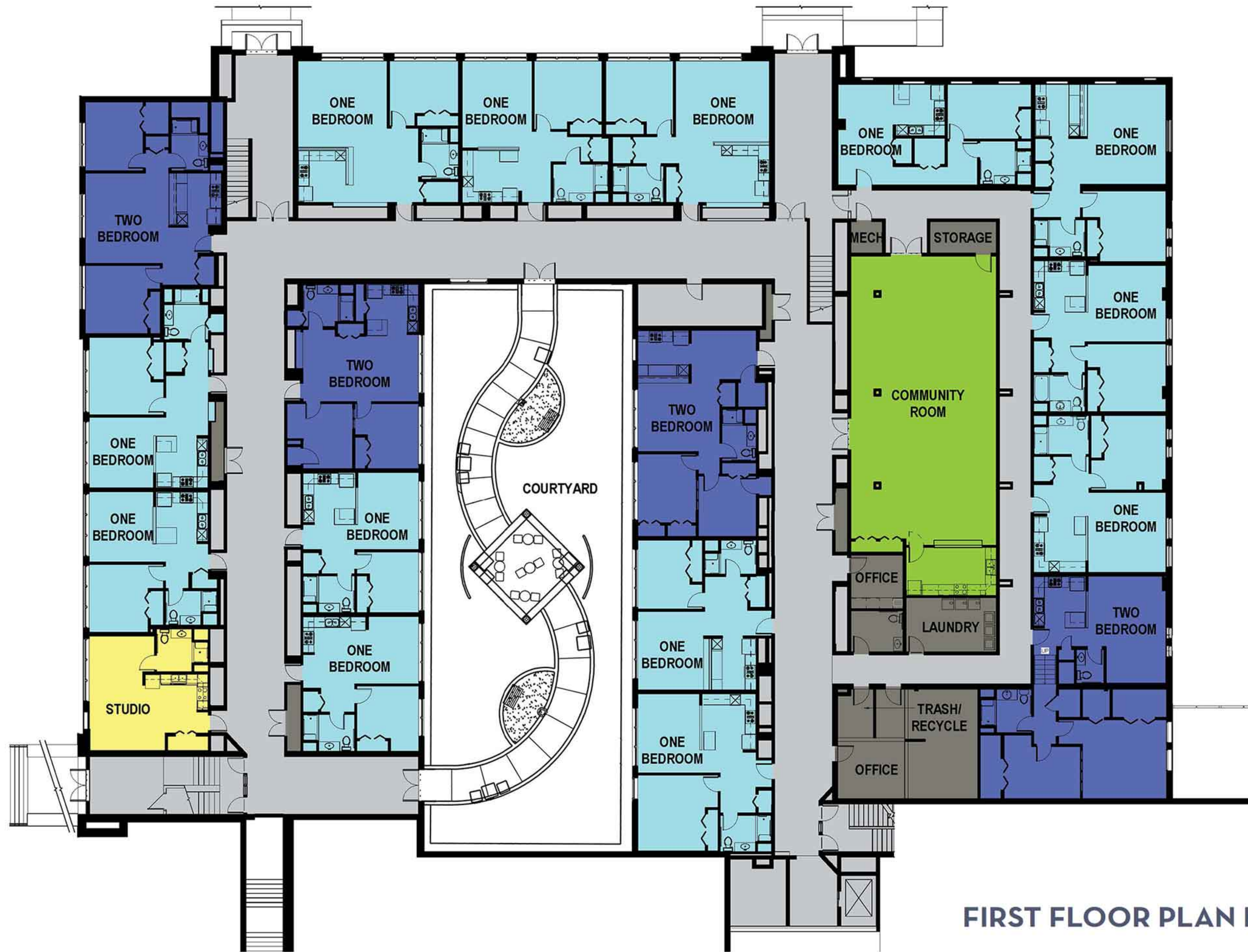
SECOND FLOOR PLAN DIAGRAM



AERIAL VIEW

THE GATEWAY - FREMONT'S PREMIER SENIOR RESIDENCES

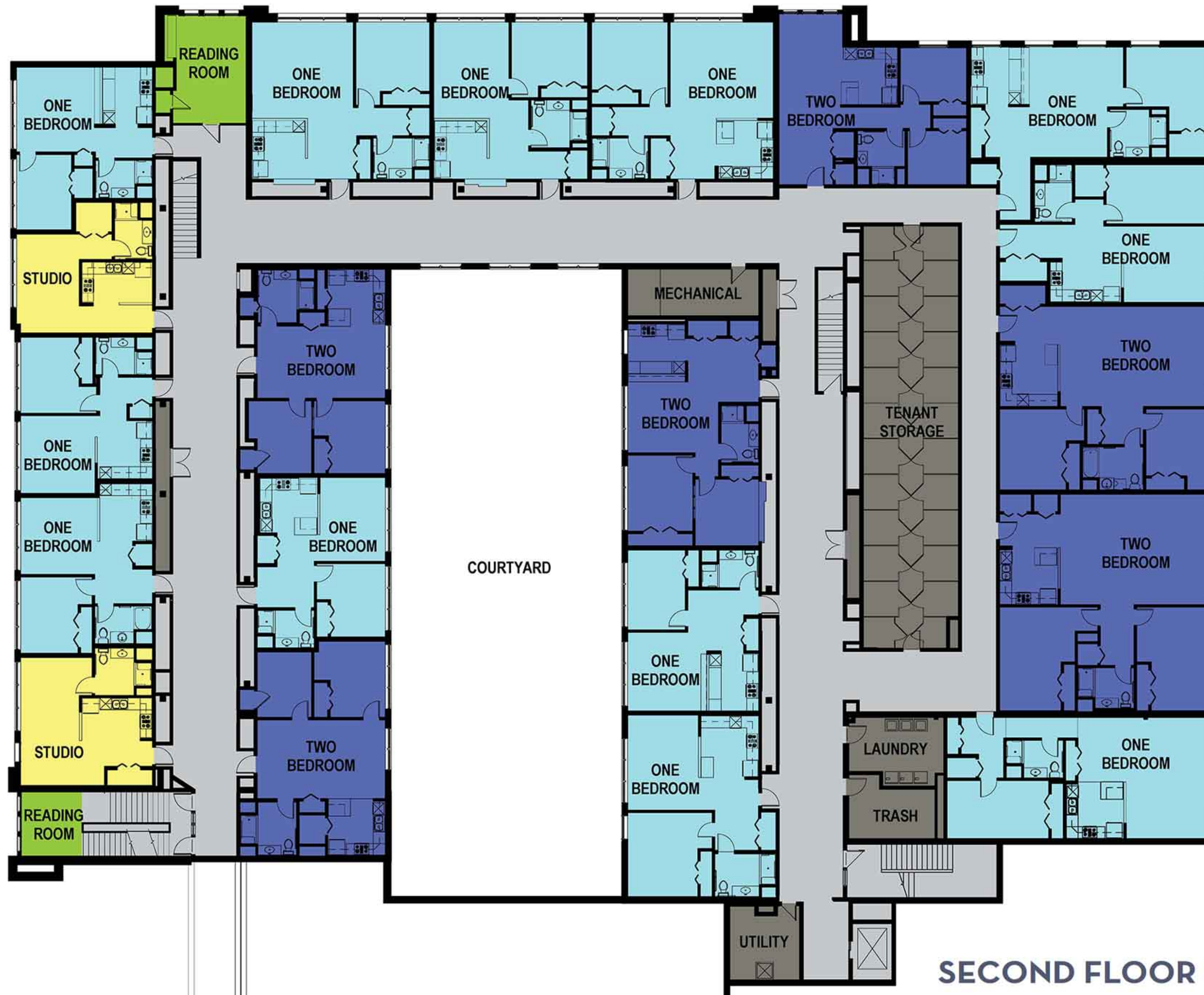
HISTORIC FREMONT HIGH SCHOOL ADAPTIVE USE



FIRST FLOOR PLAN DIAGRAM

THE GATEWAY - FREMONT'S PREMIER SENIOR RESIDENCES

HISTORIC FREMONT HIGH SCHOOL ADAPTIVE USE



SECOND FLOOR PLAN DIAGRAM